

Clashindarroch Wind Farm Extension

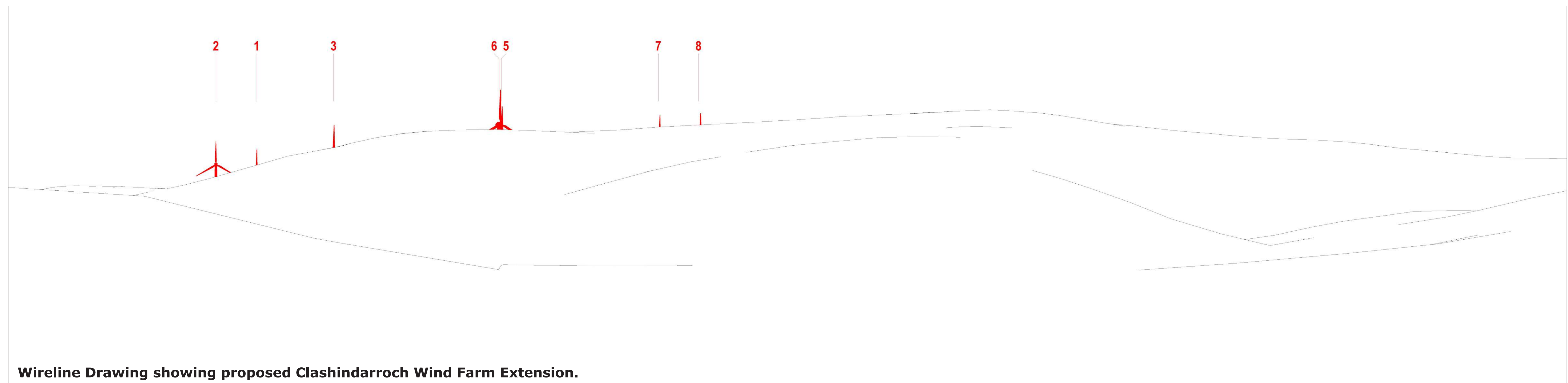
View from A941 - Blackwater Bridge



Existing view.



Photomontage showing proposed Clashindarroch Wind Farm Extension rendered into the existing view.



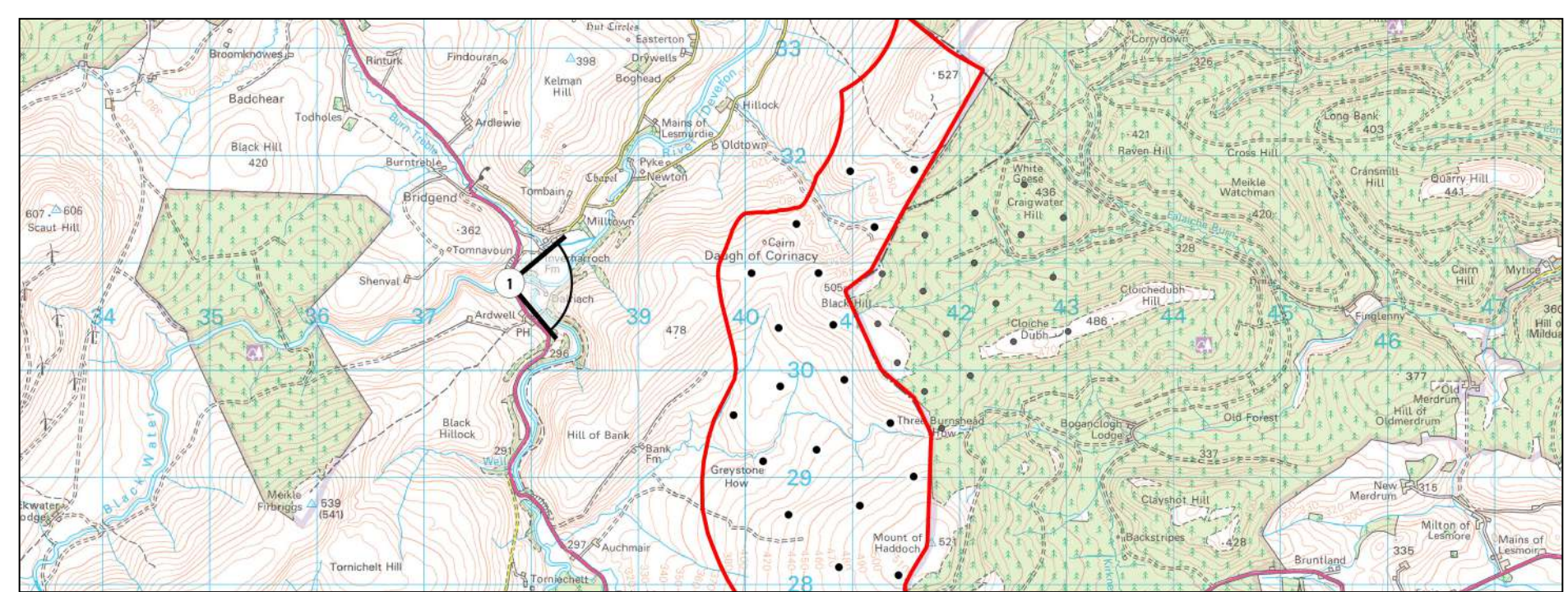
Wireline Drawing showing proposed Clashindarroch Wind Farm Extension.

Viewpoint Information

OS reference:	E337785 N830877
Ground level:	275m (AOD)
Direction of view:	106 degrees
Horizontal field of view:	90 degrees
Viewing distance:	View flat at a comfortable arm's length
Paper size:	841 x 841 mm
Correct printed image size:	820 x 220 mm
Camera height:	1.5 m AGL

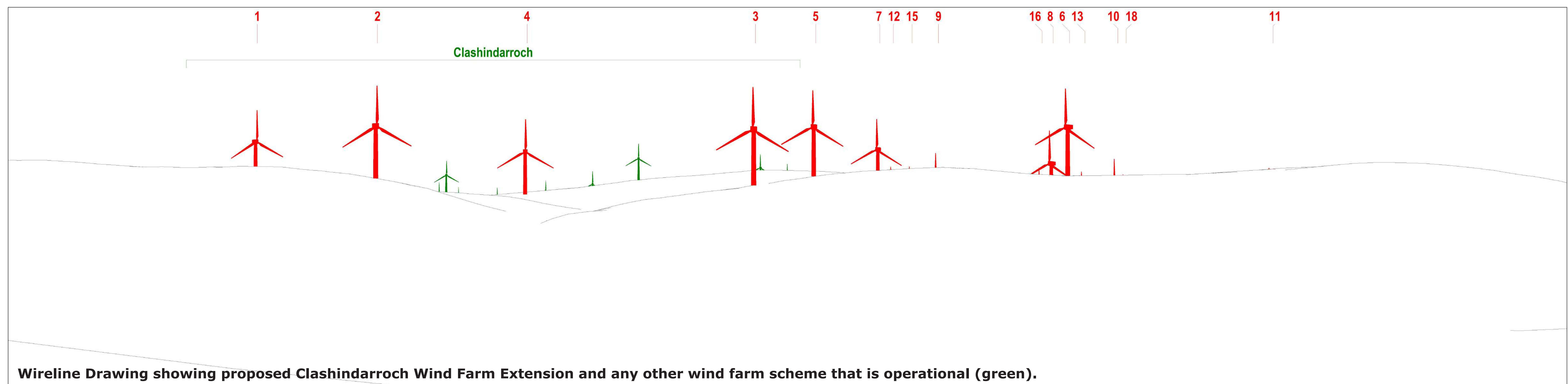
Note: Visualisations can give an impression of the appearance of a landscape and proposed wind farm. However neither photographs or visualisations can convey a view exactly as it would be seen by the human eye in reality.

Viewpoint Location Plan



Clashindarroch Wind Farm Extension

View from minor road near Boghead

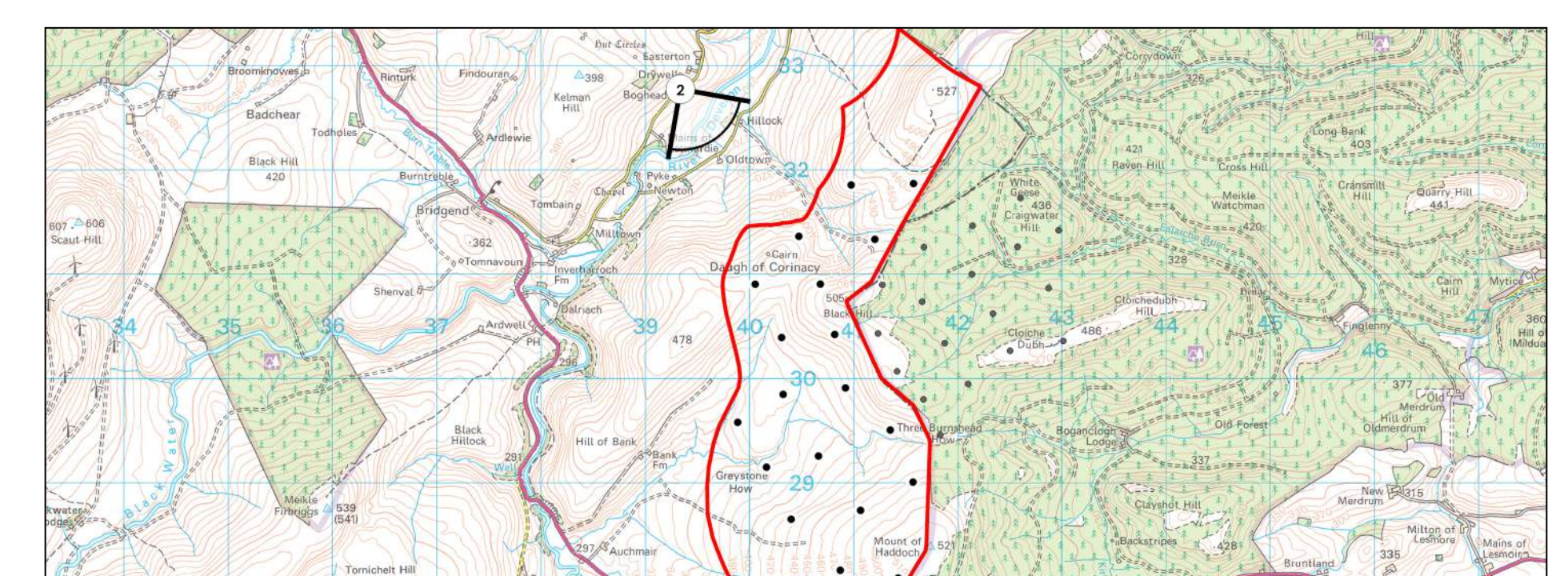


Viewpoint Information

OS reference: E339315 N832739
 Ground level: 297m (AOD)
 Direction of view: 141.75 degrees
 Horizontal field of view: 90 degrees
 Viewing distance: View flat at a comfortable arm's length
 Paper size: 841 x 841 mm
 Correct printed image size: 820 x 220 mm
 Camera height: 1.5 m AGL

Note: Visualisations can give an impression of the appearance of a landscape and proposed wind farm. However neither photographs or visualisations can convey a view exactly as it would be seen by the human eye in reality.

Viewpoint Location Plan



Clashindarroch Wind Farm Extension

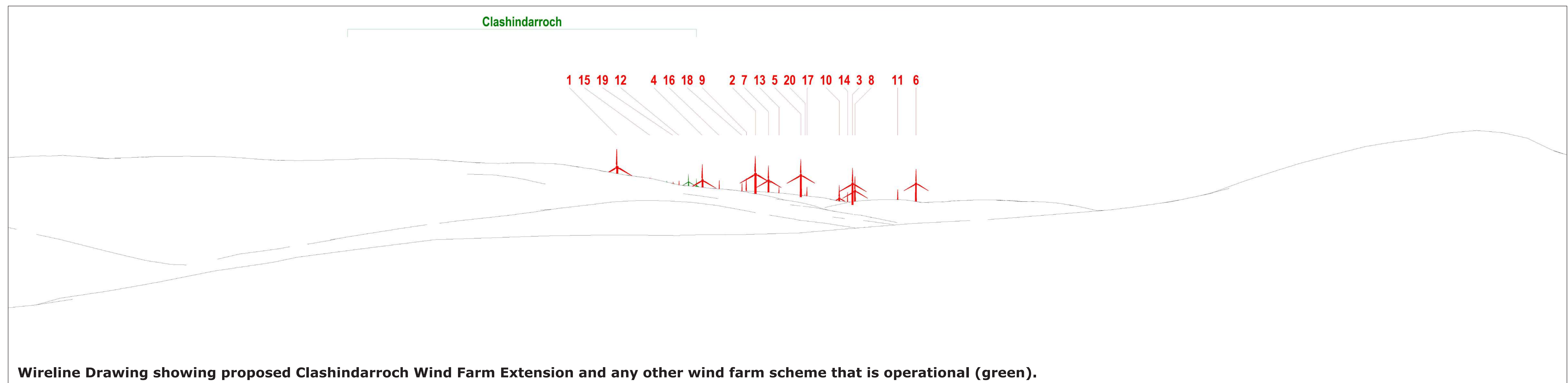
View from minor road near Backside



Existing view.



Photomontage showing proposed Clashindarroch Wind Farm Extension rendered into the existing view.



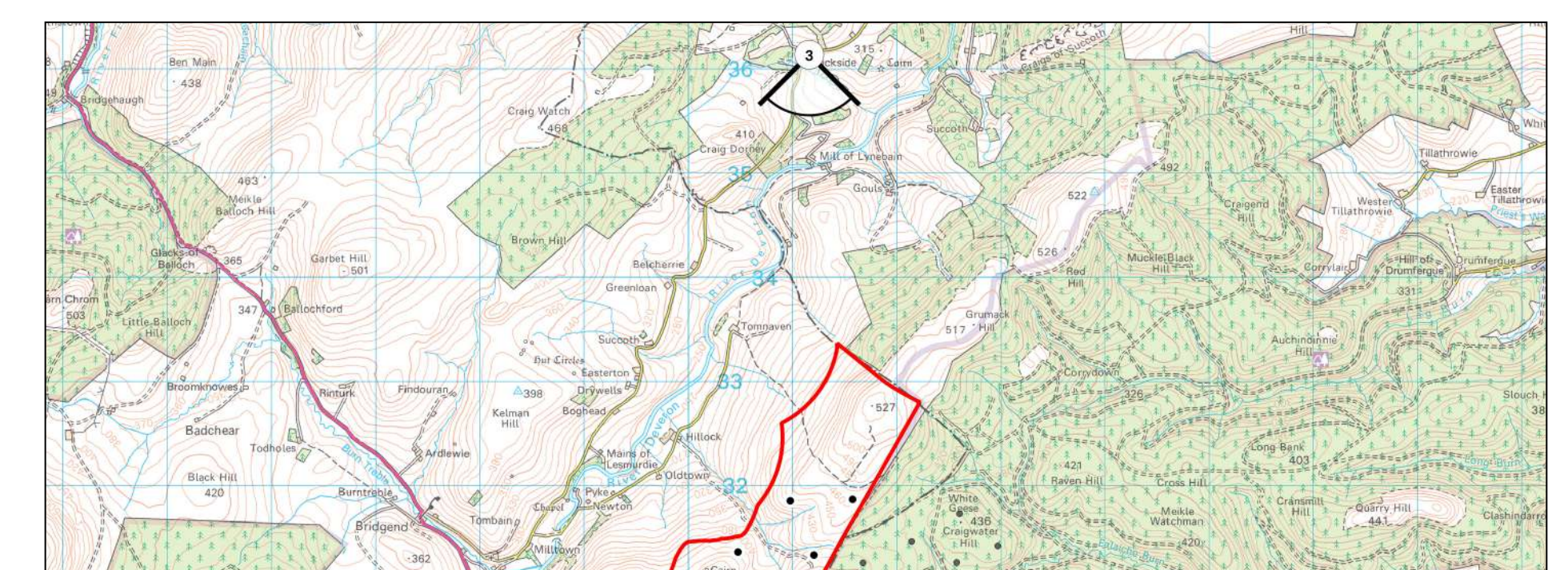
Wireline Drawing showing proposed Clashindarroch Wind Farm Extension and any other wind farm scheme that is operational (green).

Viewpoint Information

OS reference:	E341228 N836150
Ground level:	294m (AOD)
Direction of view:	185.15 degrees
Horizontal field of view:	90 degrees
Viewing distance:	View flat at a comfortable arm's length
Paper size:	841 x 841 mm
Correct printed image size:	820 x 220 mm
Camera height:	1.5 m AGL

Note: Visualisations can give an impression of the appearance of a landscape and proposed wind farm. However neither photographs or visualisations can convey a view exactly as it would be seen by the human eye in reality.

Viewpoint Location Plan



Clashindarroch Wind Farm Extension

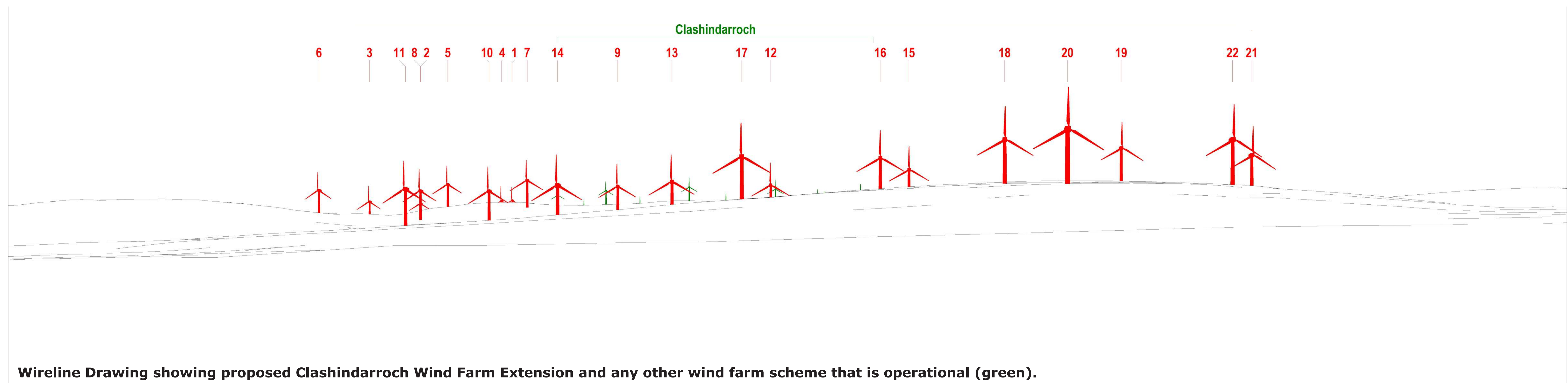
View from Minor road near Cabrach Parish Church



Existing view.



Photomontage showing proposed Clashindarroch Wind Farm Extension rendered into the existing view.



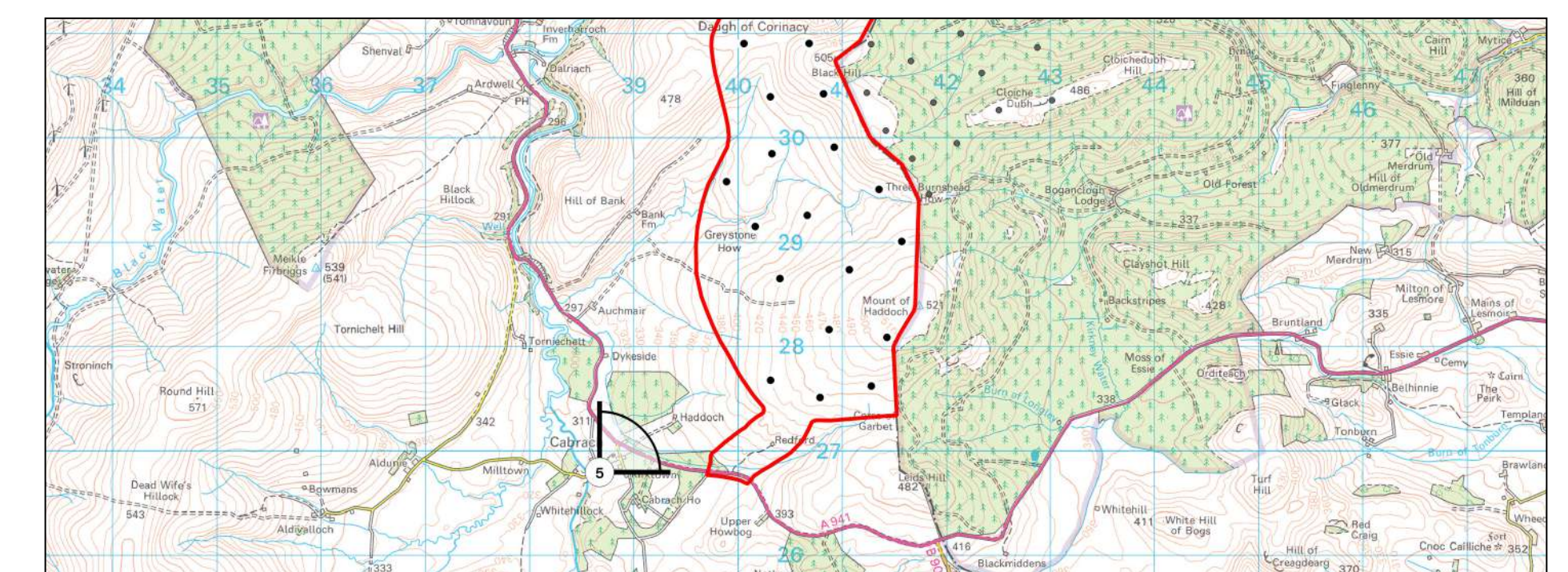
Wireline Drawing showing proposed Clashindarroch Wind Farm Extension and any other wind farm scheme that is operational (green).

Viewpoint Information

OS reference:	E338674 N826797
Ground level:	318m (AOD)
Direction of view:	45.7 degrees
Horizontal field of view:	90 degrees
Viewing distance:	View flat at a comfortable arm's length
Paper size:	841 x 841 mm
Correct printed image size:	820 x 220 mm
Camera height:	1.5 m AGL

Note: Visualisations can give an impression of the appearance of a landscape and proposed wind farm. However neither photographs or visualisations can convey a view exactly as it would be seen by the human eye in reality.

Viewpoint Location Plan



Clashindarroch Wind Farm Extension

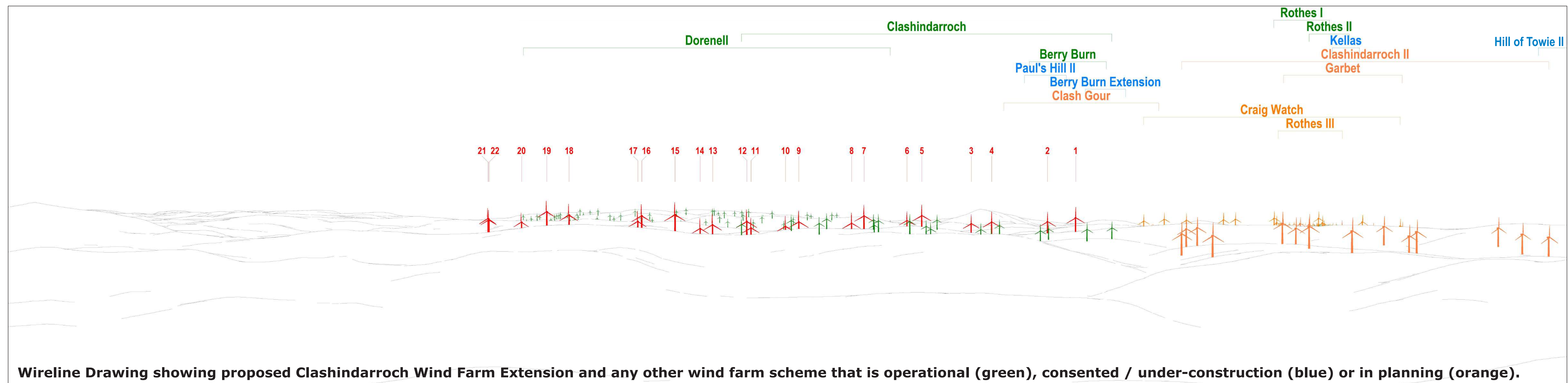
View from Tap O' Noth



Existing view.



Photomontage showing proposed Clashindarroch Wind Farm Extension rendered into the existing view.



Wireline Drawing showing proposed Clashindarroch Wind Farm Extension and any other wind farm scheme that is operational (green), consented / under-construction (blue) or in planning (orange).

Viewpoint Information

OS reference:	E348403 N829322
Ground level:	551m (AOD)
Direction of view:	273.85 degrees
Horizontal field of view:	90 degrees
Viewing distance:	View flat at a comfortable arm's length
Paper size:	841 x 841 mm
Correct printed image size:	820 x 220 mm
Camera height:	1.5 m AGL

Note: Visualisations can give an impression of the appearance of a landscape and proposed wind farm. However neither photographs or visualisations can convey a view exactly as it would be seen by the human eye in reality.

Viewpoint Location Plan

